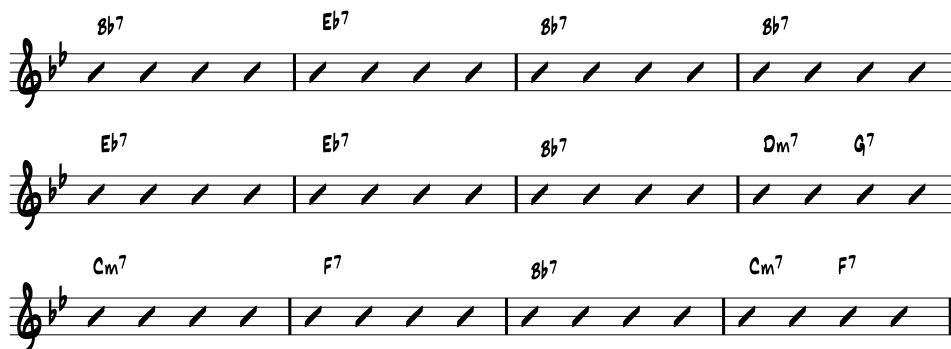


Take Note Online Jazz Workshops – Series 2

Episode 3: Understanding Blues Forms

12 Bar Blues – in (Concert) Bb



Bb7 = the '1' Chord

Eb7 = the '4' Chord

The movement to the '4' chord in the second line/5th bar is one of the most important aspects of a Blues Form. Learning to hear this change, and then outlining it in your improvising/playing is important to incorporate into your practice! There will be more on how to practice outlining the changes in the next videos.

- 1) You can start off by just counting the bars, but we want to move fairly quickly to a more organic way of 'feeling' the chord change rather than 'thinking' the chord change
- 2) Try and sing along to one of the blues recordings on the Spotify list and see if you can identify when the change happens without counting bars